

*Duplex Villas*

affiniti  
RESIDENCES

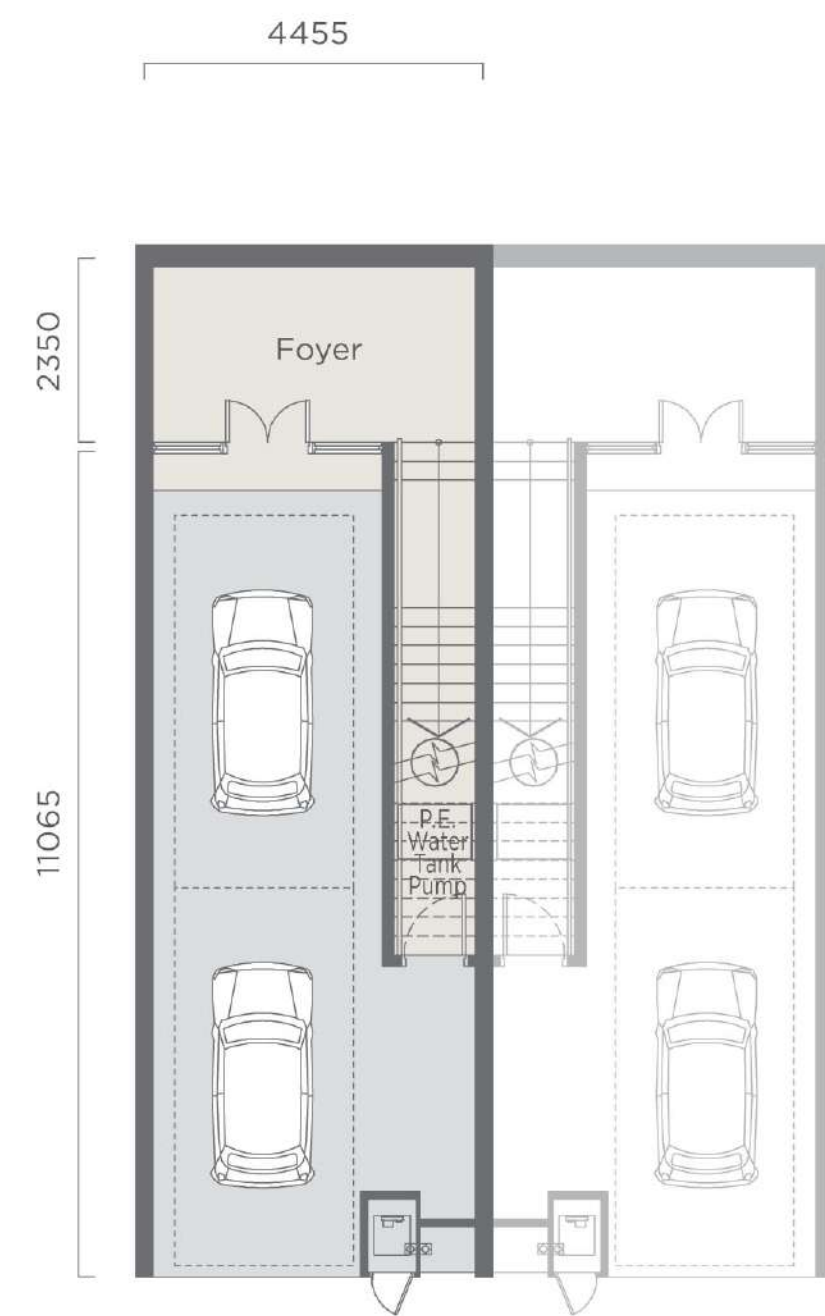


Premium and exclusive homes centred on low-density living.

# DUPLEX VILLA - *Type A*

3 BEDROOMS + FAMILY AREA  
 2 BATHROOMS + 1 POWDER ROOM  
 CHILL OUT DECK  
 AND ROOFTOP OPEN DECK

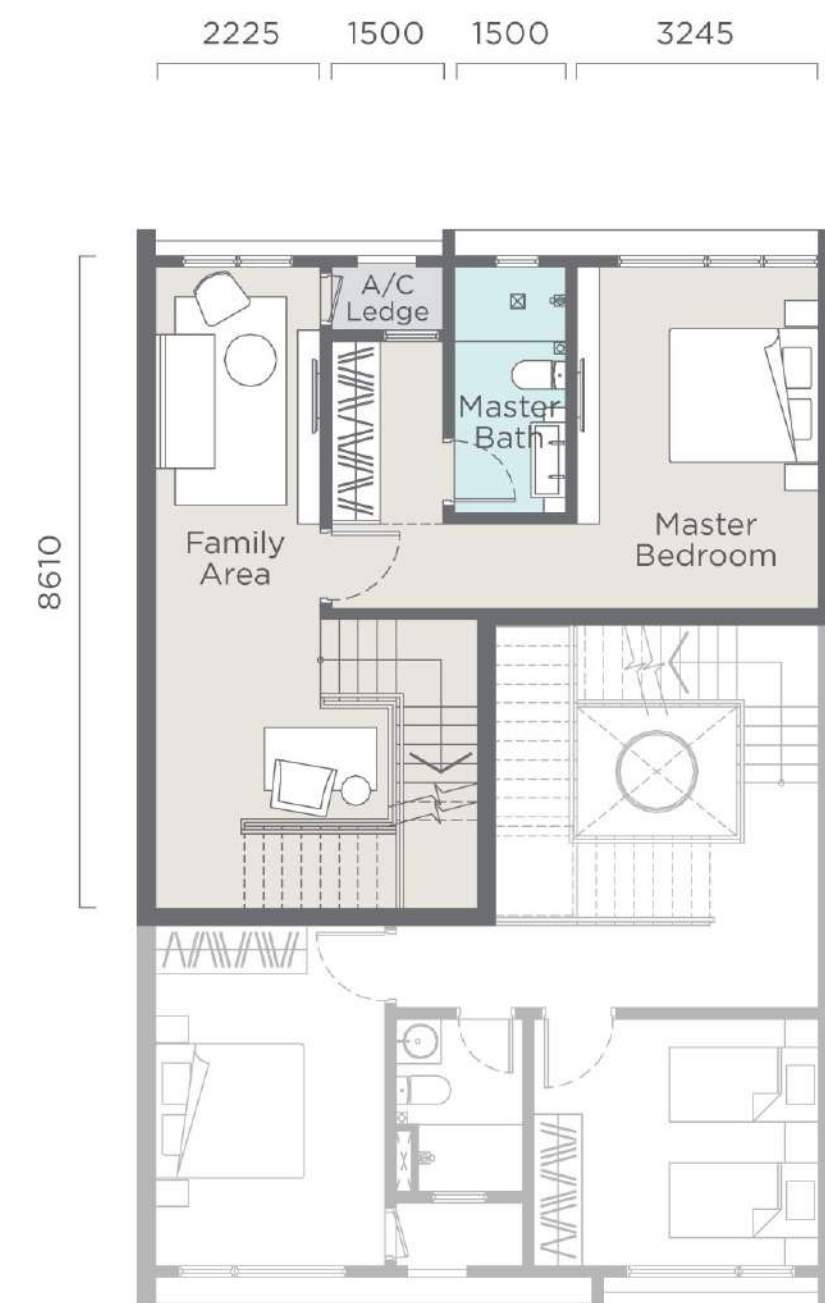
**BUILT-UP AREA**  
 3,401 sq.ft.



GROUND FLOOR



UPPER GROUND FLOOR



FIRST FLOOR



SECOND FLOOR



THIRD FLOOR

# DUPLEX VILLA - *Type B*

3 BEDROOMS + STUDY AREA  
 2 BATHROOMS + 1 POWDER ROOM  
 CHILL OUT DECK  
 AND ROOFTOP OPEN DECK

**BUILT-UP AREA**  
 3,294 sq.ft.



# affiniti

RESIDENCES

GRAND VILLAS

DUPLEX VILLAS

## GROUND LEVEL

- a Main Entrance
- b Guardhouse
- c Water Feature
- d Jogging Track

## UPPER GROUND LEVEL

- 1 Gymnasium/Yoga Studio (Ground Level)  
Outdoor Lounge (Upper Ground Level)
- 2 Linear Garden
- 3 Children Playground
- 4 Herbs Garden

