

FOR INTERNAL USE ONLY
DO NOT CIRCULATE

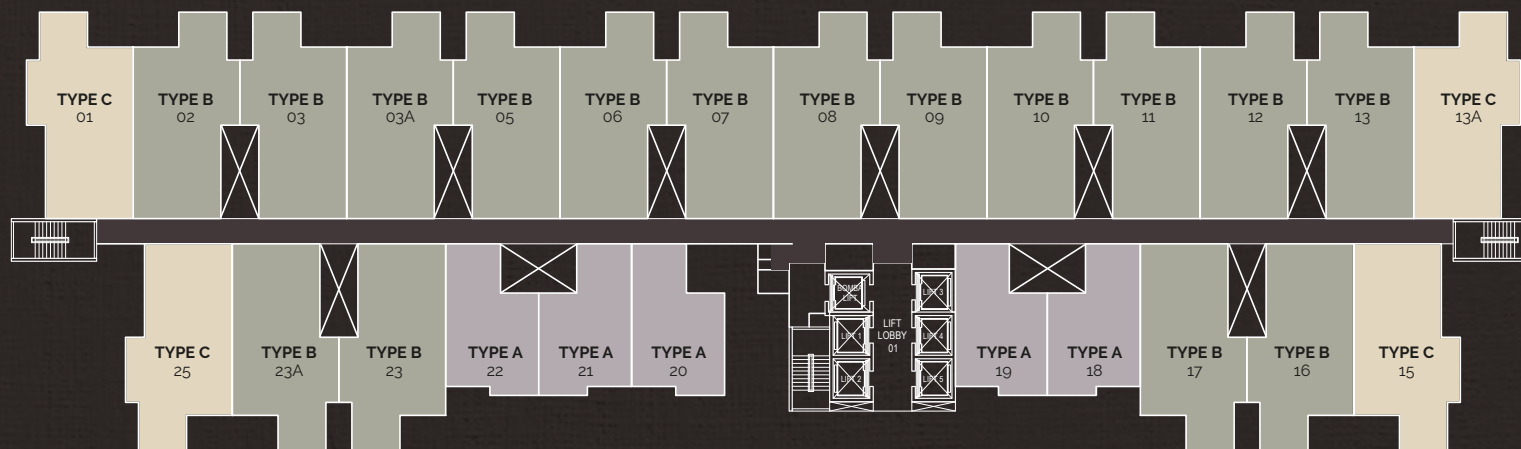
Disclaimer: This project brief is purely conceptual and for illustrative purposes only. All information and renderings contained therein are strictly provided for conceptual and illustrative purposes and are artist's impression only. All measurements stated therein are approximate. All information, renderings and measurements are subject to modification and changes. This project brief does not constitute an offer and/or form part of the contract.

Development Name	Residensi DIAN II
Developer	CPI Glenmarie Sdn Bhd (A subsidiary of CPI Land Sdn. Bhd.)
Location	Jalan Monfort, Seksyen U1, 40150 Shah Alam
Land Size	Approx. 3.084 acres
Land Category	Commercial
Land Tenure	Leasehold
Schedule Of Payment	Schedule H (HDA) - Serviced Apartment
Total units	762 units (14 commercial suites)
Unit Composition	Serviced Apartment (748 units) Type A: 550 sq ft (2 bedrooms + 1 bathroom) Type B: 834 sq ft (3 bedrooms + 2 bathrooms) Type B/G: 909 sq ft (3 bedrooms + 2 bathrooms) Type C: 834 sq ft (3 bedrooms + 2 bathrooms) Type C/G1: 909 sq ft (3 bedrooms + 2 bathrooms) Type C/G2: 1257 sq ft (3 bedrooms + 2 bathrooms)
	Commercial Suites (14 units) Type CS1: 938 sq ft Type CS2: 1021 sq ft
No. of Unit Per Floor	Level G to level 7 - 14 units Level 8 to level 33 - 25 units
No. of Lifts	6 lifts (5 nos Passenger lifts + 1 nos Bomba Lift)
No. of Block(s)	1 Block
No. of Storey for Car Park	10 Storeys (LG 1 - LG 3, Level G to level 6)
Total No. of Car Parks	1719 nos (154 Visitors + 31 OKU)
Expected Completion Date	48 months from SPA date

**DEVELOPMENT
DETAILS**

FOR INTERNAL USE ONLY
DO NOT CIRCULATE

Disclaimer: This project brief is purely conceptual and for illustrative purposes only. All information and renderings contained therein are strictly provided for conceptual and illustrative purposes and are artist's impression only. All measurements stated therein are approximate. All information, renderings and measurements are subject to modification and changes. This project brief does not constitute an offer and/or form part of the contract.



Typical Storey

FLOOR LAYOUT

**FOR INTERNAL USE ONLY
DO NOT CIRCULATE**

Disclaimer: This project brief is purely conceptual and for illustrative purposes only. All information and renderings contained therein are strictly provided for conceptual and illustrative purposes and are artist's impression only. All measurements stated therein are approximate. All information, renderings and measurements are subject to modification and changes. This project brief does not constitute an offer and/or form part of the contract.

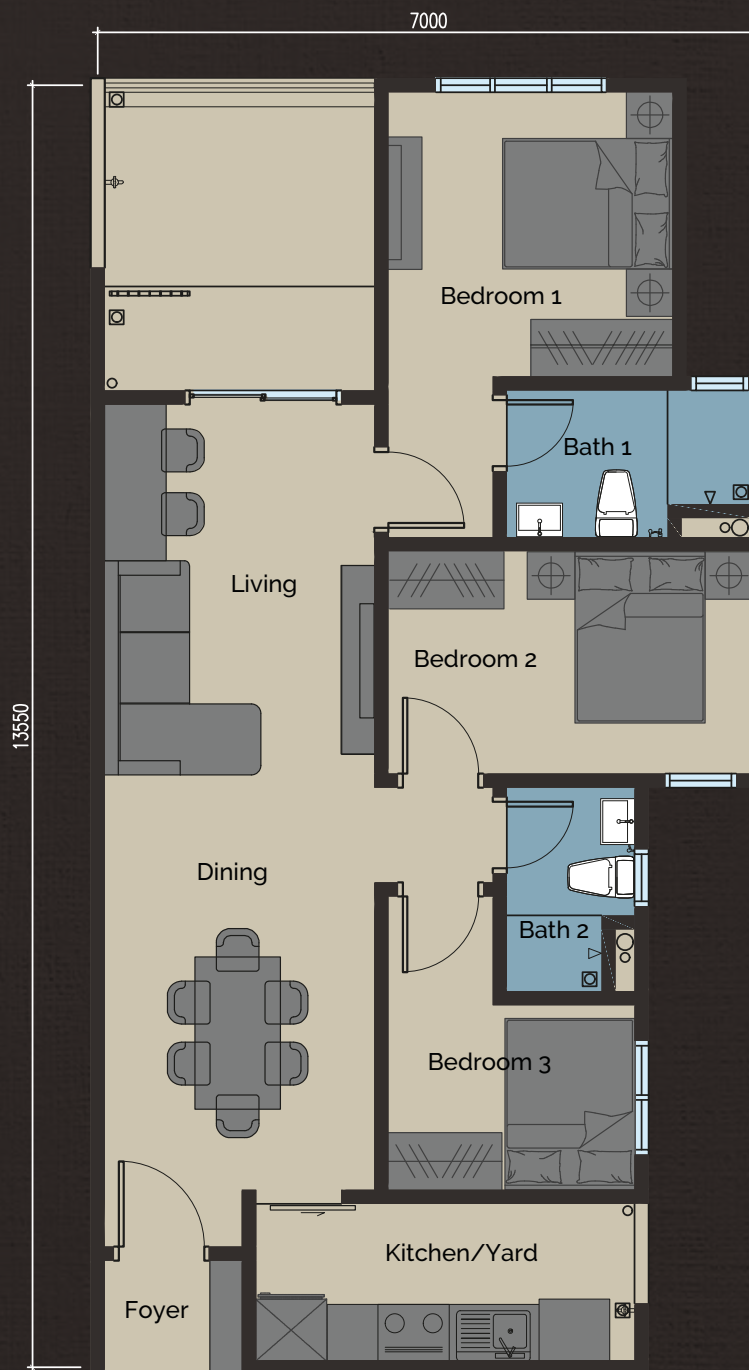


Type B
834 sq. ft.
3 Bedrooms

**FLOOR
LAYOUT**

**FOR INTERNAL USE ONLY
DO NOT CIRCULATE**

Disclaimer: This project brief is purely conceptual and for illustrative purposes only. All information and renderings contained therein are strictly provided for conceptual and illustrative purposes and are artist's impression only. All measurements stated therein are approximate. All information, renderings and measurements are subject to modification and changes. This project brief does not constitute an offer and/or form part of the contract.

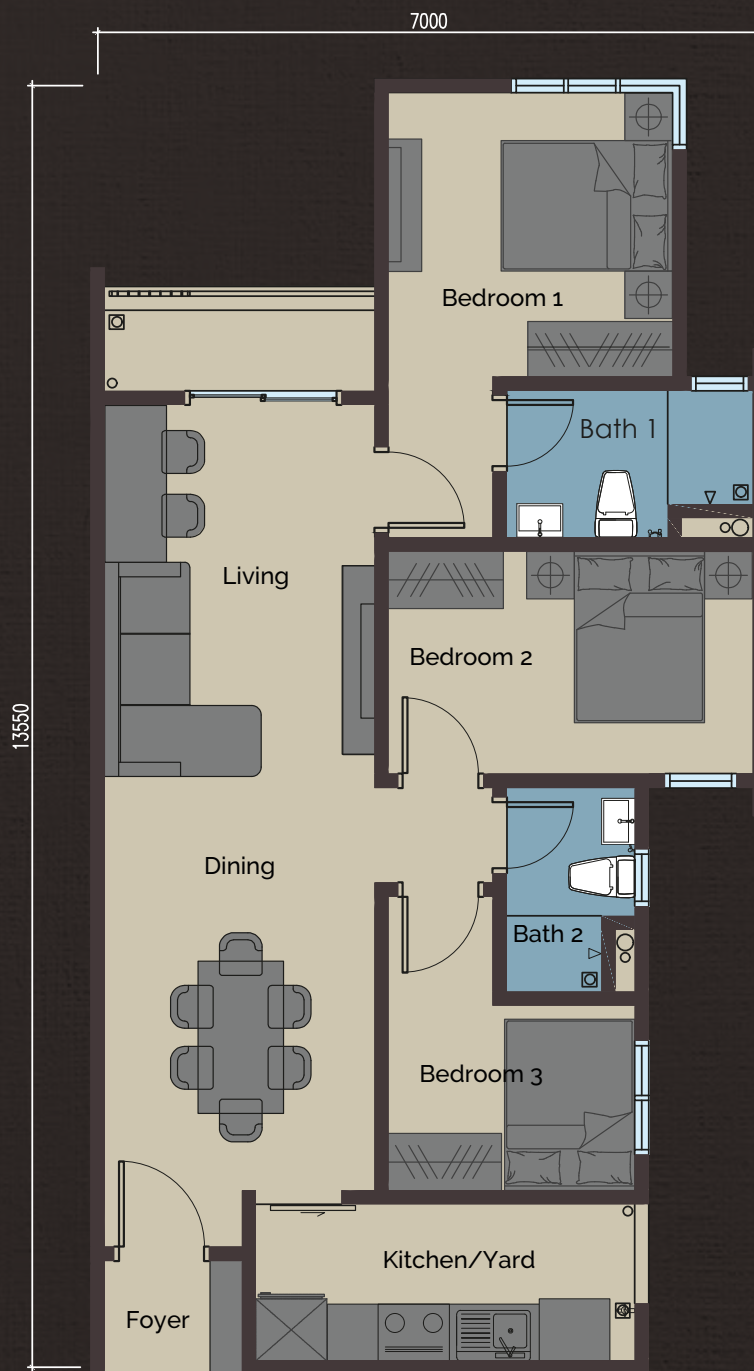


Type B/G
909 sq. ft.
3 Bedrooms

**FLOOR
LAYOUT**

**FOR INTERNAL USE ONLY
DO NOT CIRCULATE**

Disclaimer: This project brief is purely conceptual and for illustrative purposes only. All information and renderings contained therein are strictly provided for conceptual and illustrative purposes and are artist's impression only. All measurements stated therein are approximate. All information, renderings and measurements are subject to modification and changes. This project brief does not constitute an offer and/or form part of the contract.



Type C
834 sq. ft.
3 Bedrooms

**FLOOR
LAYOUT**

**FOR INTERNAL USE ONLY
DO NOT CIRCULATE**

Disclaimer: This project brief is purely conceptual and for illustrative purposes only. All information and renderings contained therein are strictly provided for conceptual and illustrative purposes and are artist's impression only. All measurements stated therein are approximate. All information, renderings and measurements are subject to modification and changes. This project brief does not constitute an offer and/or form part of the contract.

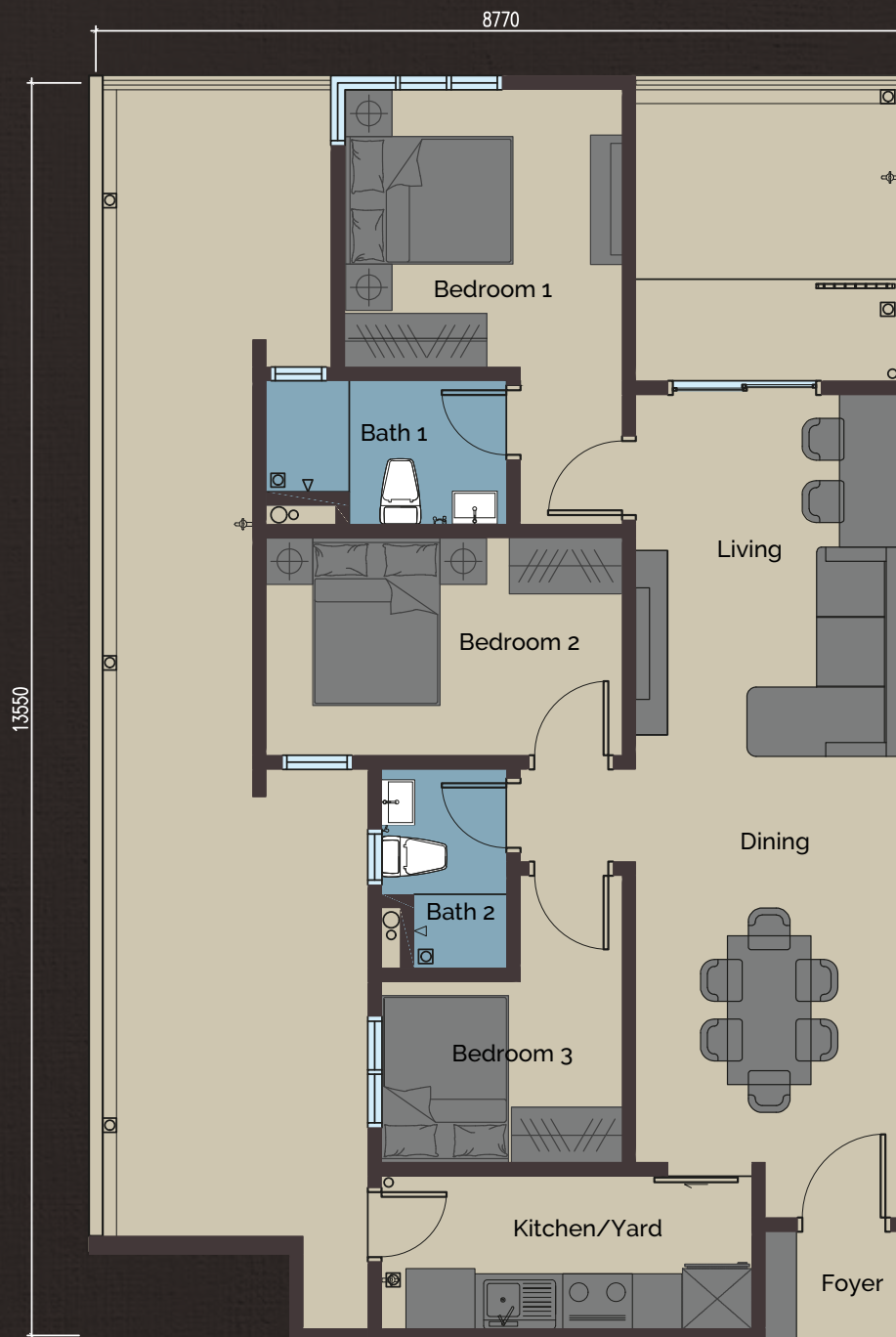


Type C/G1
909 sq. ft.
3 Bedrooms

**FLOOR
LAYOUT**

**FOR INTERNAL USE ONLY
DO NOT CIRCULATE**

Disclaimer: This project brief is purely conceptual and for illustrative purposes only. All information and renderings contained therein are strictly provided for conceptual and illustrative purposes and are artist's impression only. All measurements stated therein are approximate. All information, renderings and measurements are subject to modification and changes. This project brief does not constitute an offer and/or form part of the contract.



Type C/G2
1,257 sq. ft.
3 Bedrooms

**FLOOR
LAYOUT**