

# Inspired by Nature's Perfection

ForestHill Residences emerges as an oasis in the metropolis; as a development crafted to enhance its verdant surroundings. More than just a home, it rises as a new green lung within the prime location of Damansara Perdana, surrounded by a calm lake and rolling hills. Situated next to a forest, residents wake up to fresh, cooling air and enjoy a well-balanced environment with seamless access to lifestyle amenities.



*Facade Overlooking Lake And Forest*

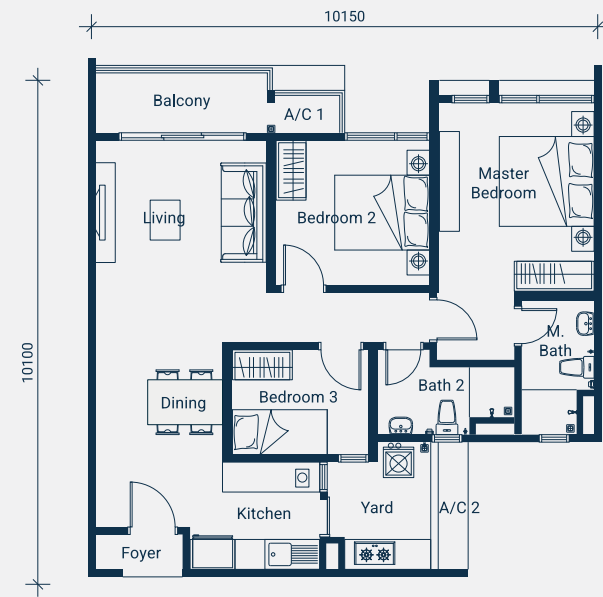


# Functional Details

Each unit is curated to bring the elements of nature seamlessly into the living spaces, allowing residents to relish in the beauty of ForestHill Residences. The units are also crafted for every need with sizes that cater to all, from starter families to multigenerational living.

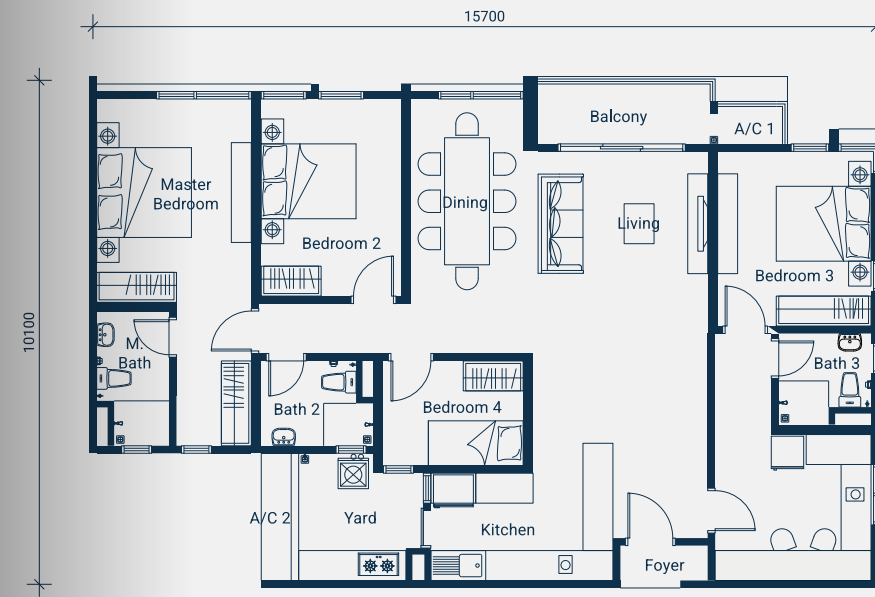
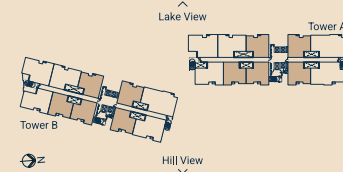


Living Room



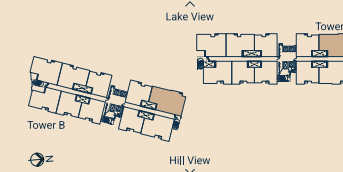
**Type A**

with Balcony  
953 SQ. FT.  
3 Rooms | 2 Baths  
2 Carparks

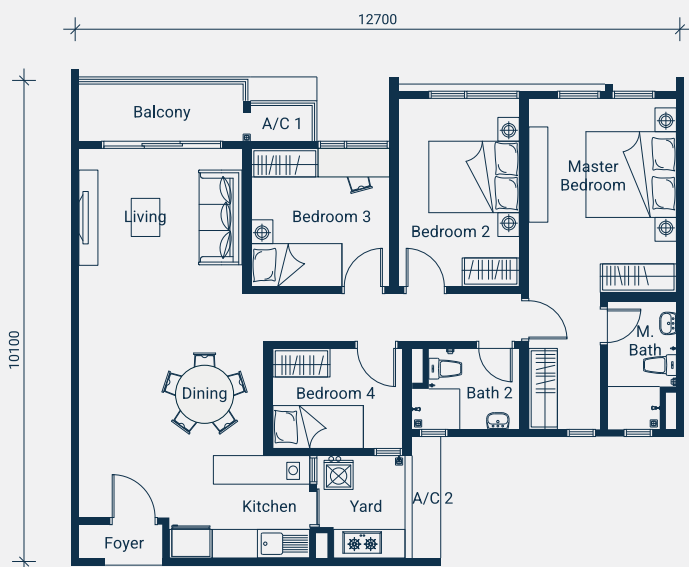


**Type D**

Dual-Key Concept  
with Balcony  
1,527 SQ. FT.  
4 Rooms | 3 Baths  
3 Carparks

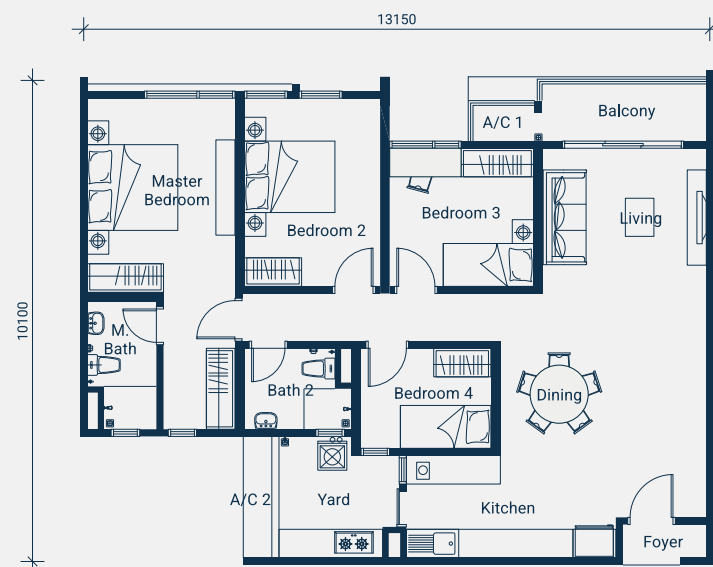
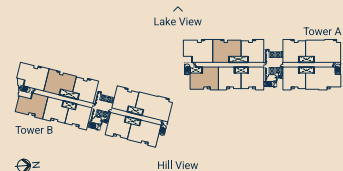


Master Bedroom



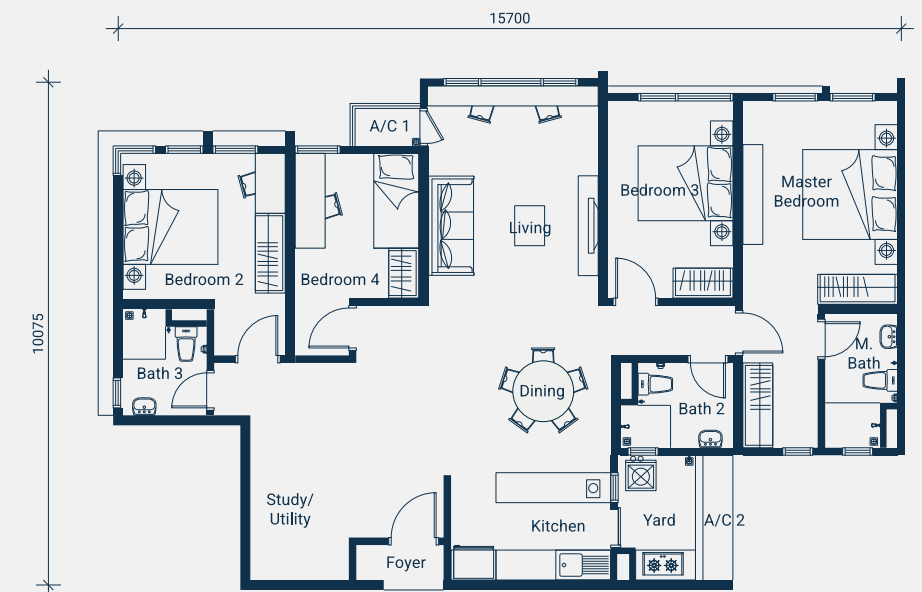
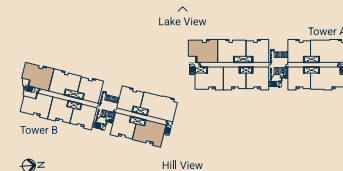
**Type B**

with Balcony  
1,164 SQ. FT.  
4 Rooms | 2 Baths  
2 Carparks



**Type C**

with Balcony  
1,259 SQ. FT.  
4 Rooms | 2 Baths  
2 Carparks



**Type F**

Dual-Key Concept  
without Balcony  
1,401 SQ. FT.  
4 Rooms | 3 Baths  
3 Carparks

