

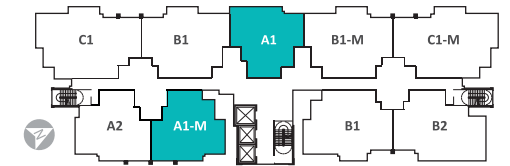
3-Storey Villa (Intermediate Unit)

Land Size: 24' x 75'
Built-up: 3,500 sq. ft.
4 Bedrooms + 2

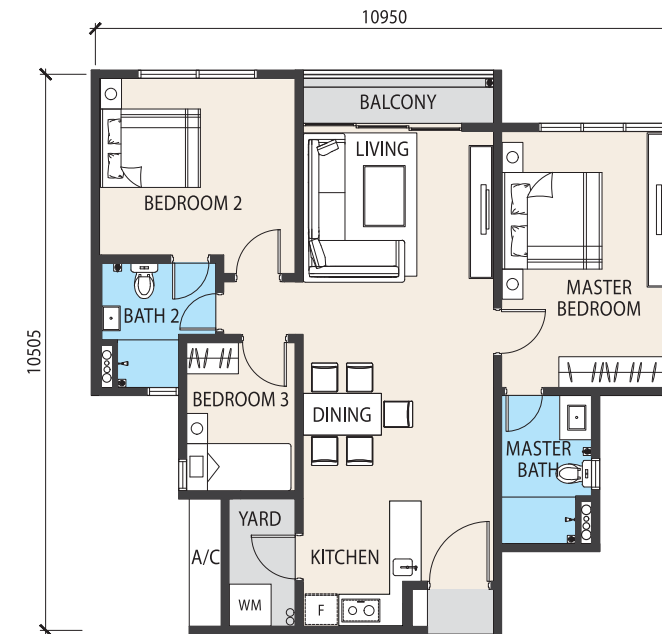


Type A1

Built Up: 1,001 sq. ft.
3 Bedrooms

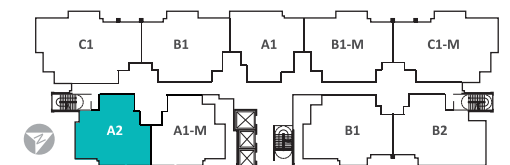


Level 2 - 13, 15 - 23a



Type A2

Built Up: 1,022 sq. ft.
3 Bedrooms

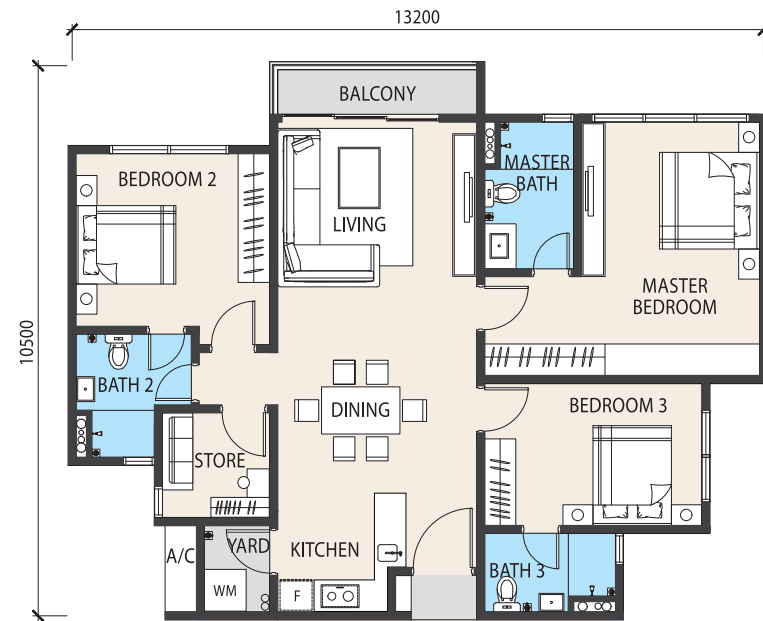
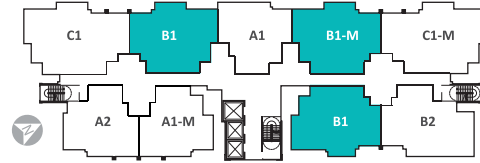


Level 2 - 13, 15 - 23a



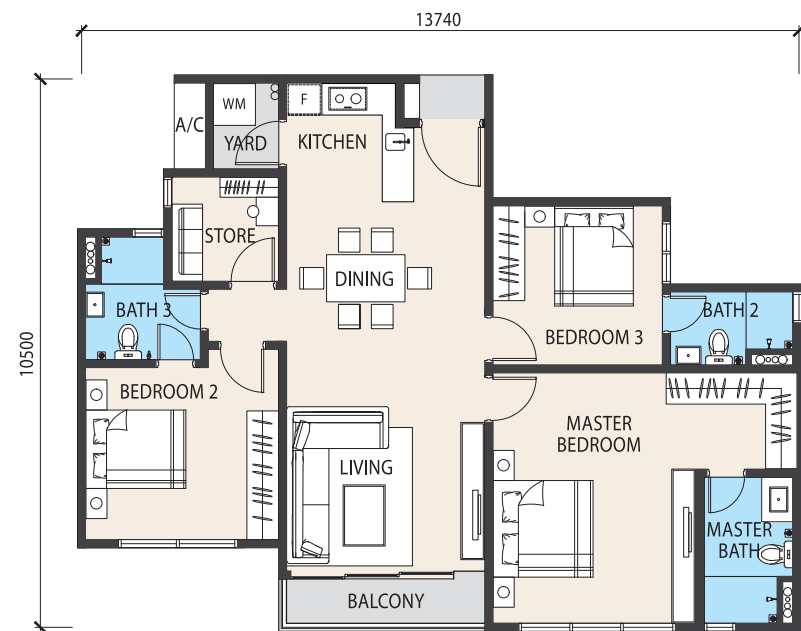
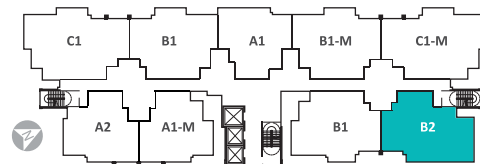
Type B1

Built Up: 1,216 sq. ft.
3 Bedrooms + 1



Type B2

Built Up: 1,227 sq. ft.
3 Bedrooms + 1



Type C1

Built Up: 1,431 sq. ft.
4 Bedrooms + 1

