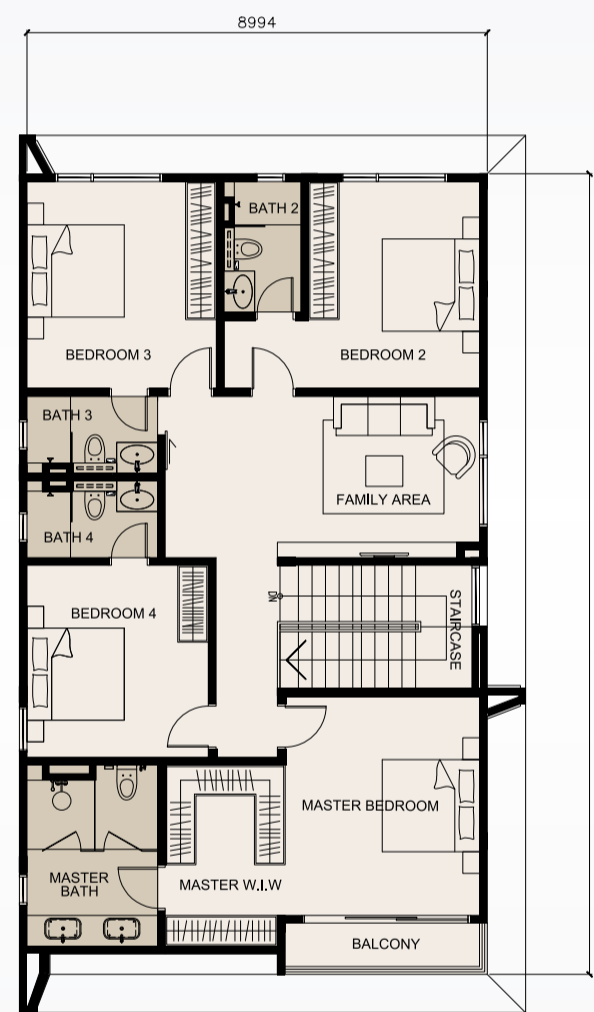


# Type A1

50' x 80' & 50' x 90'  
 Total Built-Up Area: 3,353 sq.ft.  
 5 + 2 bedrooms, 6 bathrooms



Ground Floor



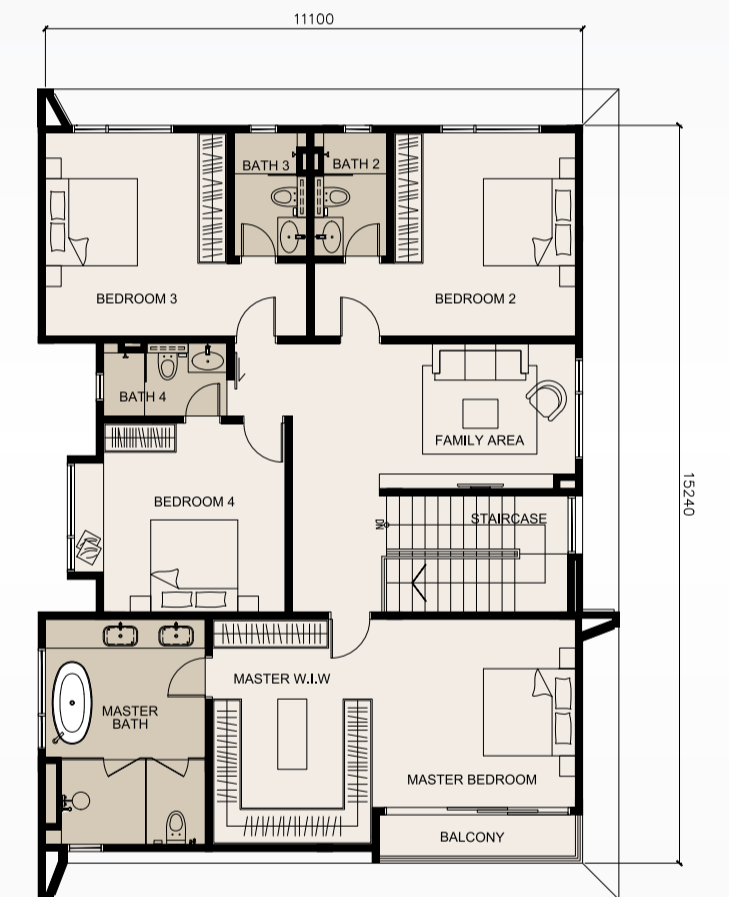
First Floor

# Type A2

60' x 80' & 65' x 80'  
 Total Built-Up Area: 3,818 sq.ft.  
 5 + 2 bedrooms, 6 bathrooms



Ground Floor



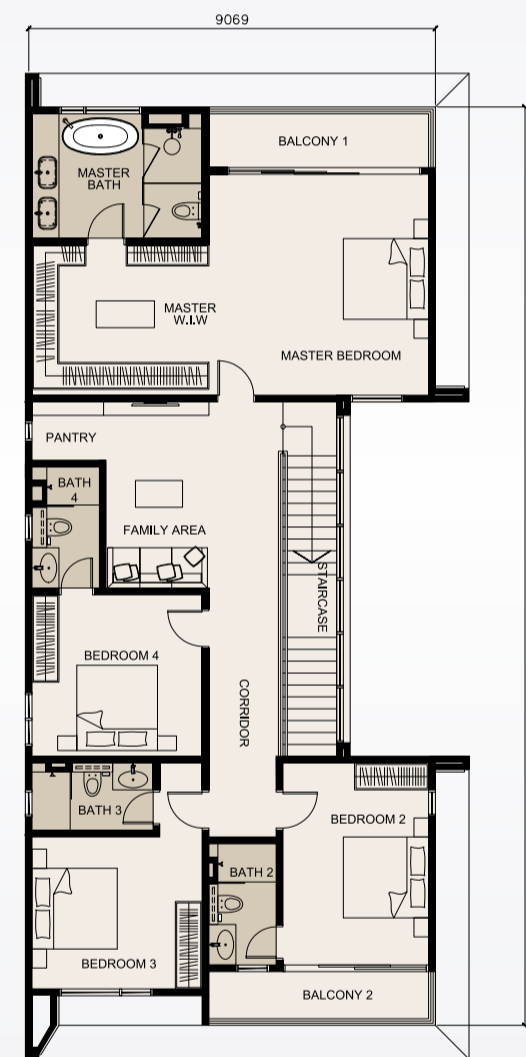
First Floor

## Type B<sub>1</sub>

50' x 95'  
 Total Built-Up Area: 3,991 sq.ft.  
 5 + 2 bedrooms, 6 + 1 bathrooms



Ground Floor



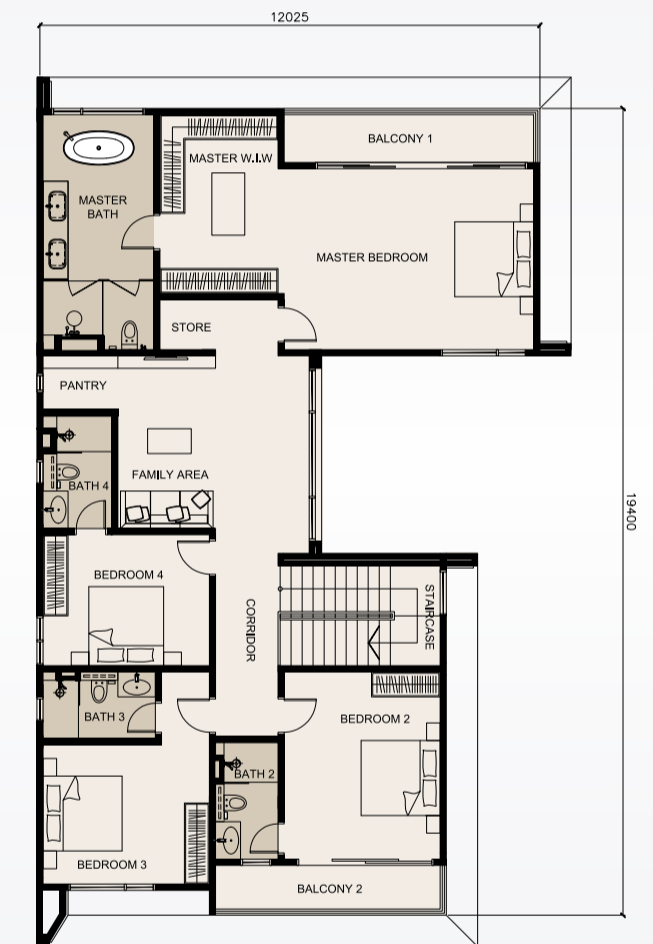
First Floor

## Type B<sub>2</sub>

50' x 95' & 60' x 95'  
 Total Built-Up Area: 4,466 sq.ft.  
 5 + 2 bedrooms, 6 + 1 bathrooms



Ground Floor



First Floor