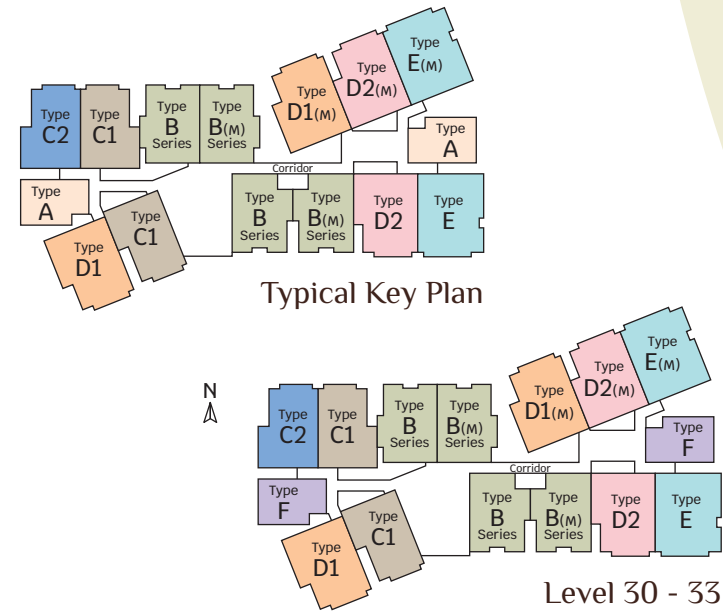


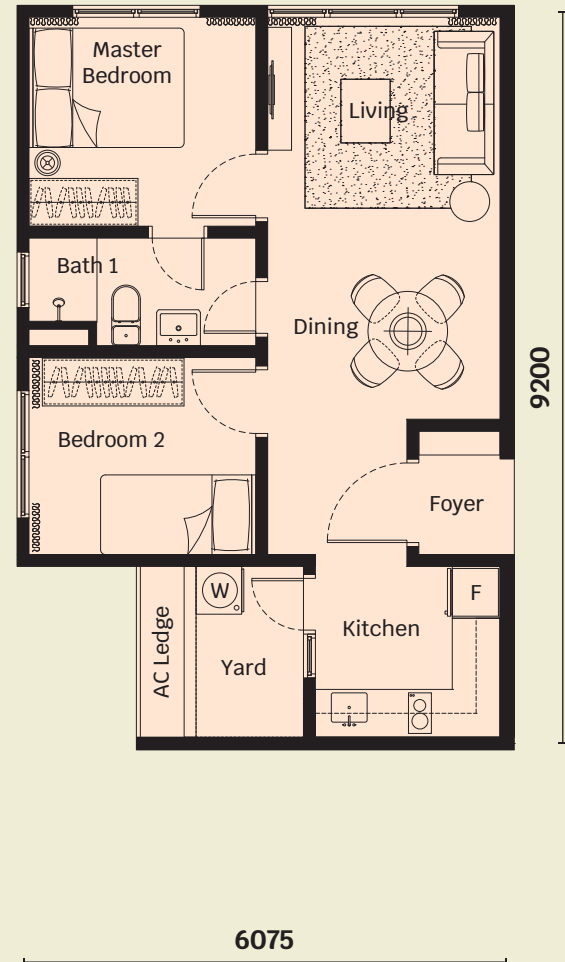
FLEXIBLE & FUNCTIONAL

Helix2 offers a range of units for **every lifestyle desire.**

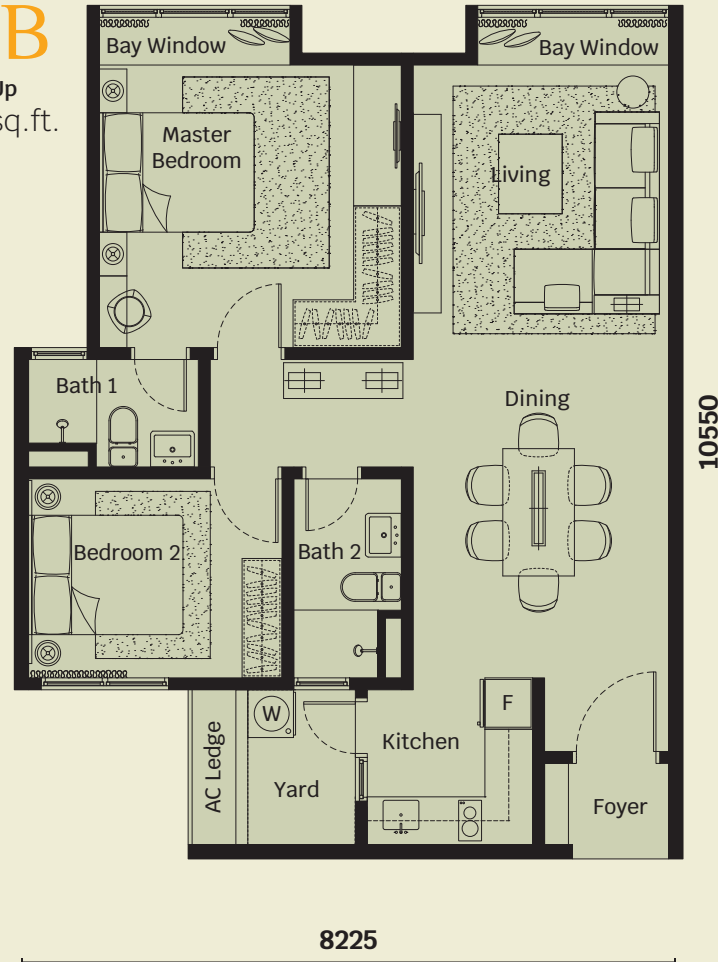
There are six configurations **perfectly suited** for singles, couples, small and large families.



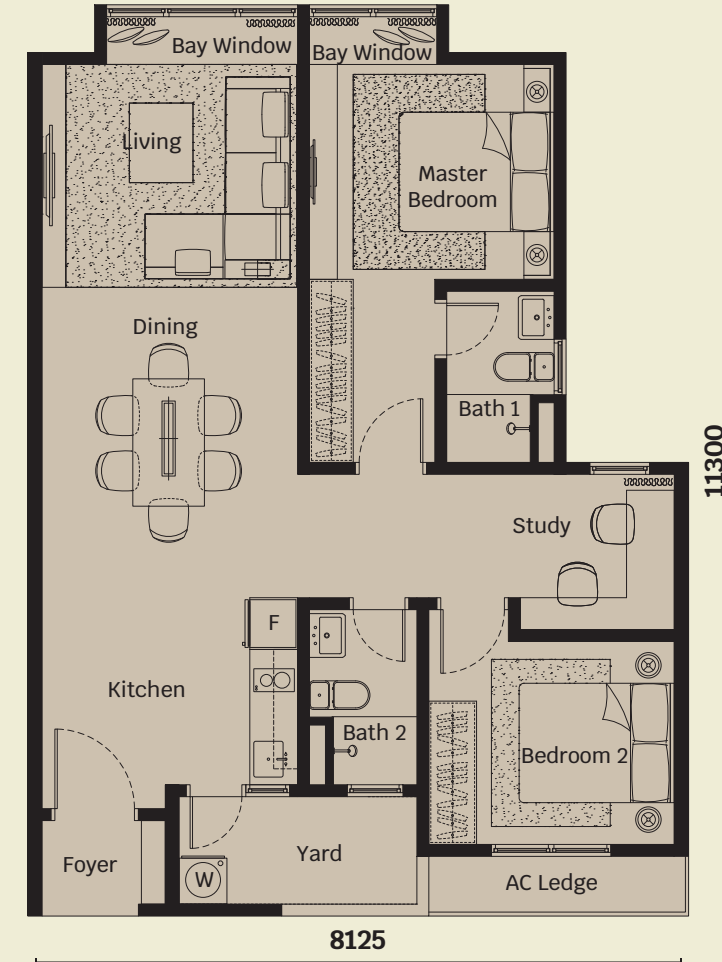
Type **A**
Built-Up
572 sq.ft.



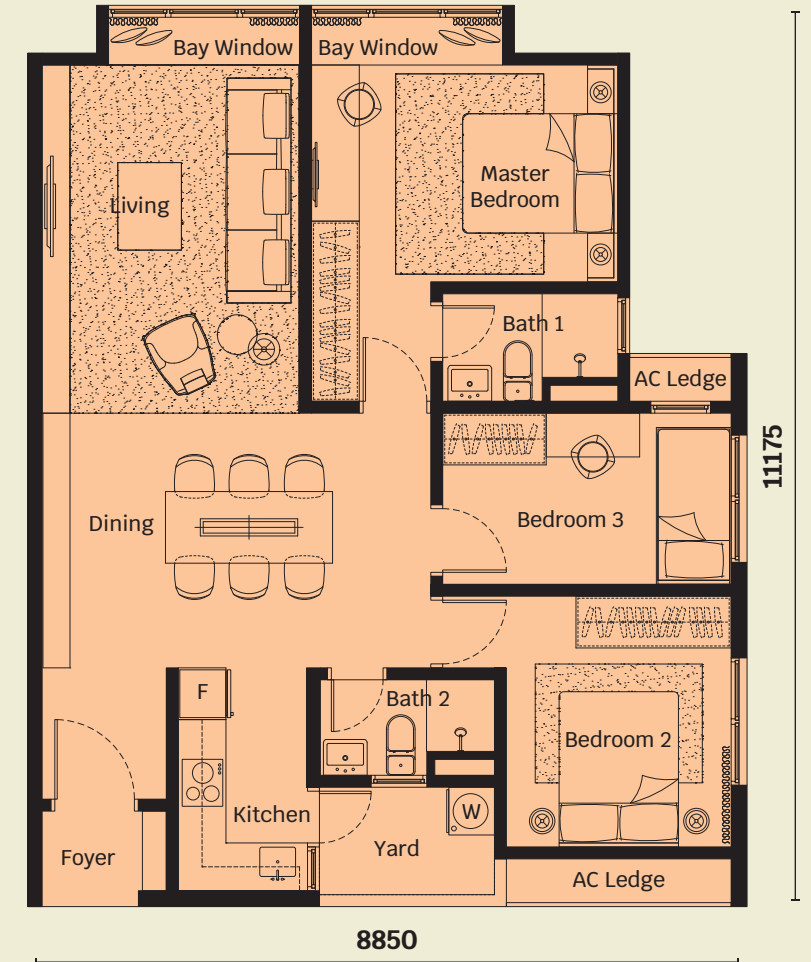
Type **B**
Built-Up
839 sq.ft.



Type **C1**
Built-Up
883 sq.ft.



Type **D1**
Built-Up
990 sq.ft.



Building Specification

Structure	Reinforced Concrete
Wall	Reinforced Concrete / Brick Wall
Roof Covering	Reinforced Concrete Slab
Windows	Aluminium Frame Glass Window
Doors	Main Entrance: Metal Frame Fire Rated Timber Door Bedroom: Metal Frame Timber Flush Door Bathroom: Metal Frame Timber Flush Door Yard: Metal Frame Timber Flush Door
Ironmongeries	Selected Locksets
Ceiling Finishes	Skim Coat / Plaster Ceiling to Selected Ceiling
Wall Finishes	Living, Dining: Plaster & Paint / Skim Coat Kitchen: Plaster & Paint / Skim Coat / Selected Tiles Bedroom: Plaster & Paint / Skim Coat Bathroom: Selected Tiles Yard: Plaster & Paint / Skim Coat
Floor Finishes	Living, Dining: Laminated Timber Kitchen: Selected Tiles Bedroom: Laminated Timber Bathroom: Selected Tiles Staircase (Type F): Laminated Timber Air Cond Ledge: Cement Render Yard: Cement Render Bay Window: Cement Render
Fittings-Out	Kitchen: Electrical Hob & Hood (Except Type A AH) Bathroom: Instant Water Heater (Except Type A AH)

Note: Type A AH = Type A Affordable Home

Schedule of Electrical Installation

Type	A-OMU	A-AH	B	B1	B2	B3	C1	C2	D1	D2	E	F
	572 sf	572 sf	839 sf	839 sf	839 sf	839 sf	883 sf	883 sf	990 sf	990 s	1,065 sf	1,054 sf
Lighting Point	12	12	14	14	14	14	16	16	17	17	18	23
13A Switch Socket Outlet	12	12	13	13	13	13	15	15	15	15	16	20
Fan Point	3	3	3	3	3	3	4	4	4	4	4	6
Air-Cond Point	3	3	3	3	3	3	3	3	4	4	4	4
Water Heater Point	1	1	2	2	2	2	2	2	2	2	2	2
SMATV Point	2	1	2	2	2	2	2	2	2	2	2	3
Door Bell Point	1	1	1	1	1	1	1	1	1	1	1	1
Kitchen Hob Point	1	1	1	1	1	1	1	1	1	1	1	1
Kitchen Hood Point	1	1	1	1	1	1	1	1	1	1	1	1
Distribution Board	1	1	1	1	1	1	1	1	1	1	1	1
Fiber Wall Socket	1	1	1	1	1	1	1	1	1	1	1	1
Data Point	-	-	-	-	-	-	-	-	-	-	-	2

Sanitary Installation

Type	A-OMU	A-AH	B	B1	B2	B3	C1	C2	D1	D2	E	F
	572 sf	572 sf	839 sf	839 sf	839 sf	839 sf	883 sf	883 sf	990 sf	990 s	1,065 sf	1,054 sf
Shower head	-	1	-	-	-	-	-	-	-	-	-	-
Shower head with instant water heater	1	-	2	2	2	2	2	2	2	2	2	2
Wash Basin with Tap	1	1	2	2	2	2	2	2	2	2	2	2
Water Closet	1	1	2	2	2	2	2	2	2	2	2	2
Kitchen Sink with Tap	1	1	1	1	1	1	1	1	1	1	1	1

Note: OMU = Open Market Unit, AH = Affordable Home

Type **E**
Built-Up
1,065 sq.ft.



Type **F**
Built-Up
1,054 sq.ft.



Note: Type A AH = Type A Affordable Home