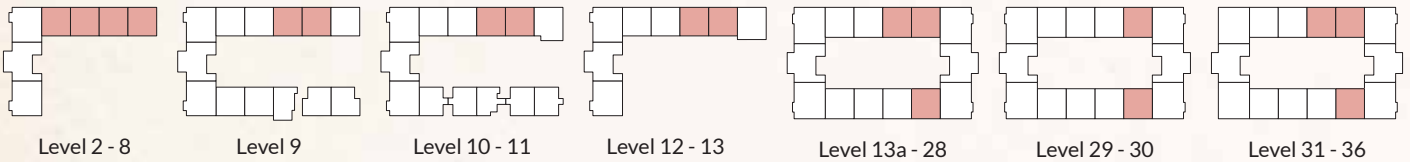
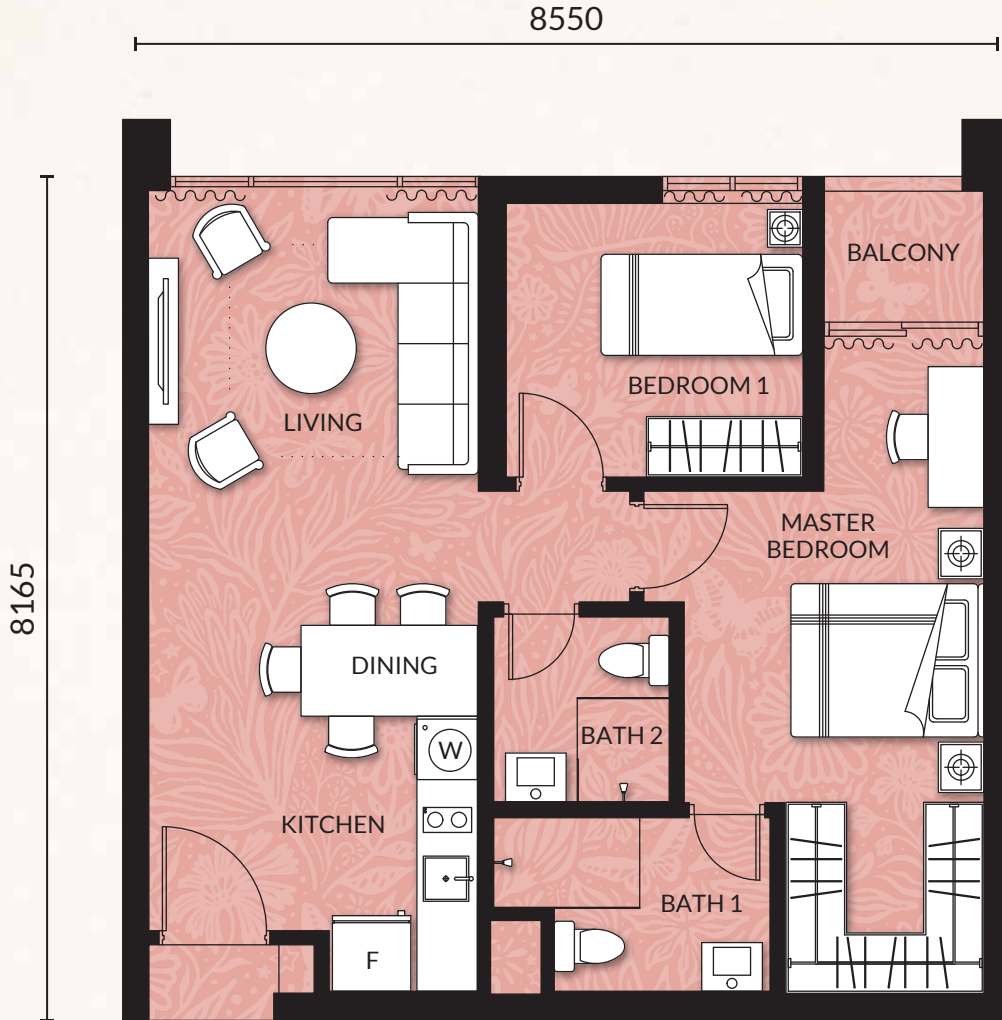


Type 1

105 Units
 Built-up: 753 sq.ft.
 2 Bedrooms + 2 Bathrooms

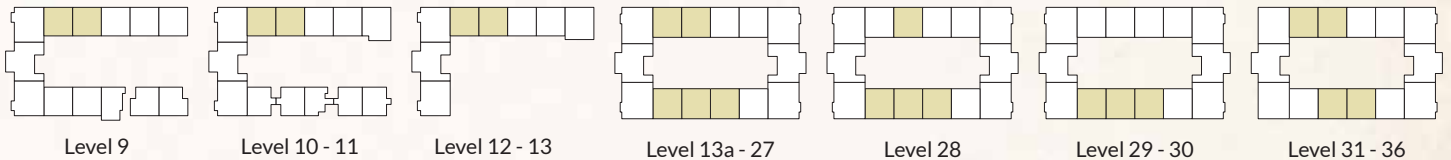
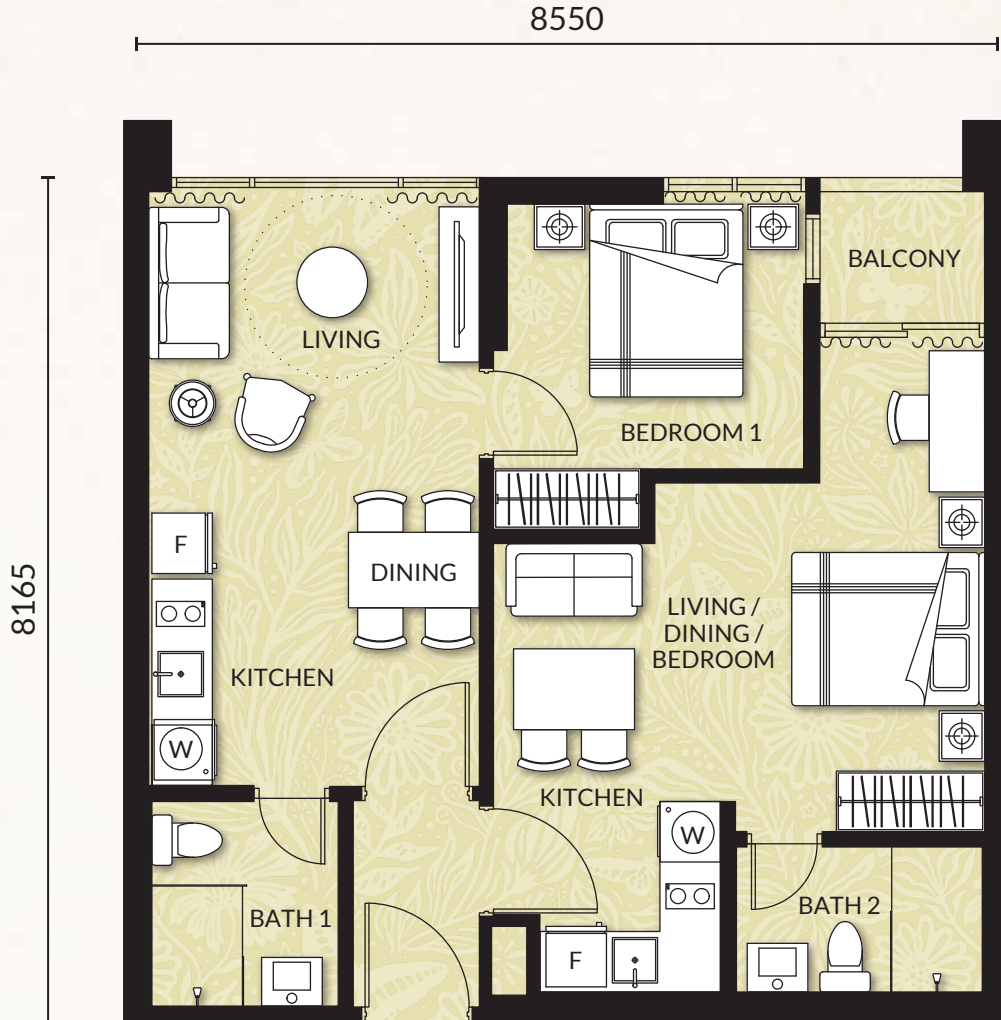


This contemporary, **flexible yet compact** design is ideal for small families or young professionals alike. Luxuriate in a spacious master bedroom with a walk-in wardrobe (or study nook) and balcony for more light and views. With its prime location, it's also **perfect investment for first home** buyers.

The information contained herein is subject to change and cannot form part of an offer or contract. All measurements are approximate. While every reasonable care has been taken to prepare this brochure, the developer cannot be held responsible for any inaccuracy. All items are subject to variations, modifications and substitutions as may be required by the authorities or recommended by the architect or engineer.

Type 1A

114 Units
 Built-up: 753 sq.ft.
 2 Bedrooms + 2 Bathrooms



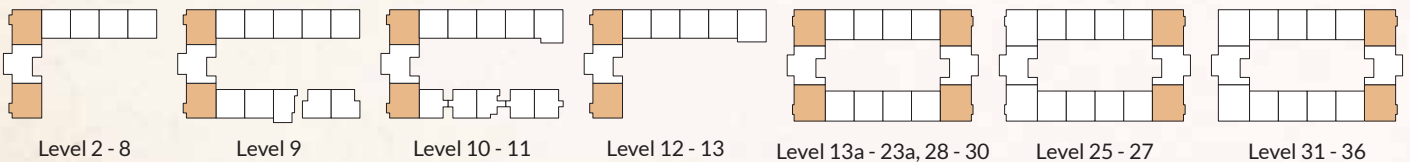
Dual Key

Enjoy the freedom of living independently while having a **rental income** with this **Dual Key** unit. This popular property design contains **two self-contained living spaces** in a single unit, allows buyers/investors to receive one or two rental incomes. It is also ideal for **extended families** - enabling families to live together while allowing for complete privacy and separation.

The information contained herein is subject to change and cannot form part of an offer or contract. All measurements are approximate. While every reasonable care has been taken to prepare this brochure, the developer cannot be held responsible for any inaccuracy. All items are subject to variations, modifications and substitutions as may be required by the authorities or recommended by the architect or engineer.

Type 2

98 Units
 Built-up: 973 sq.ft.
 3 Bedrooms + 2 Bathrooms

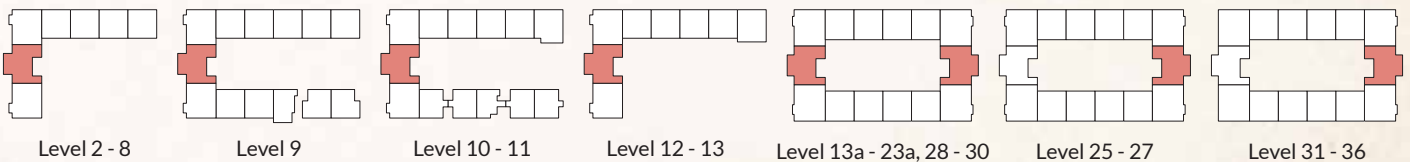
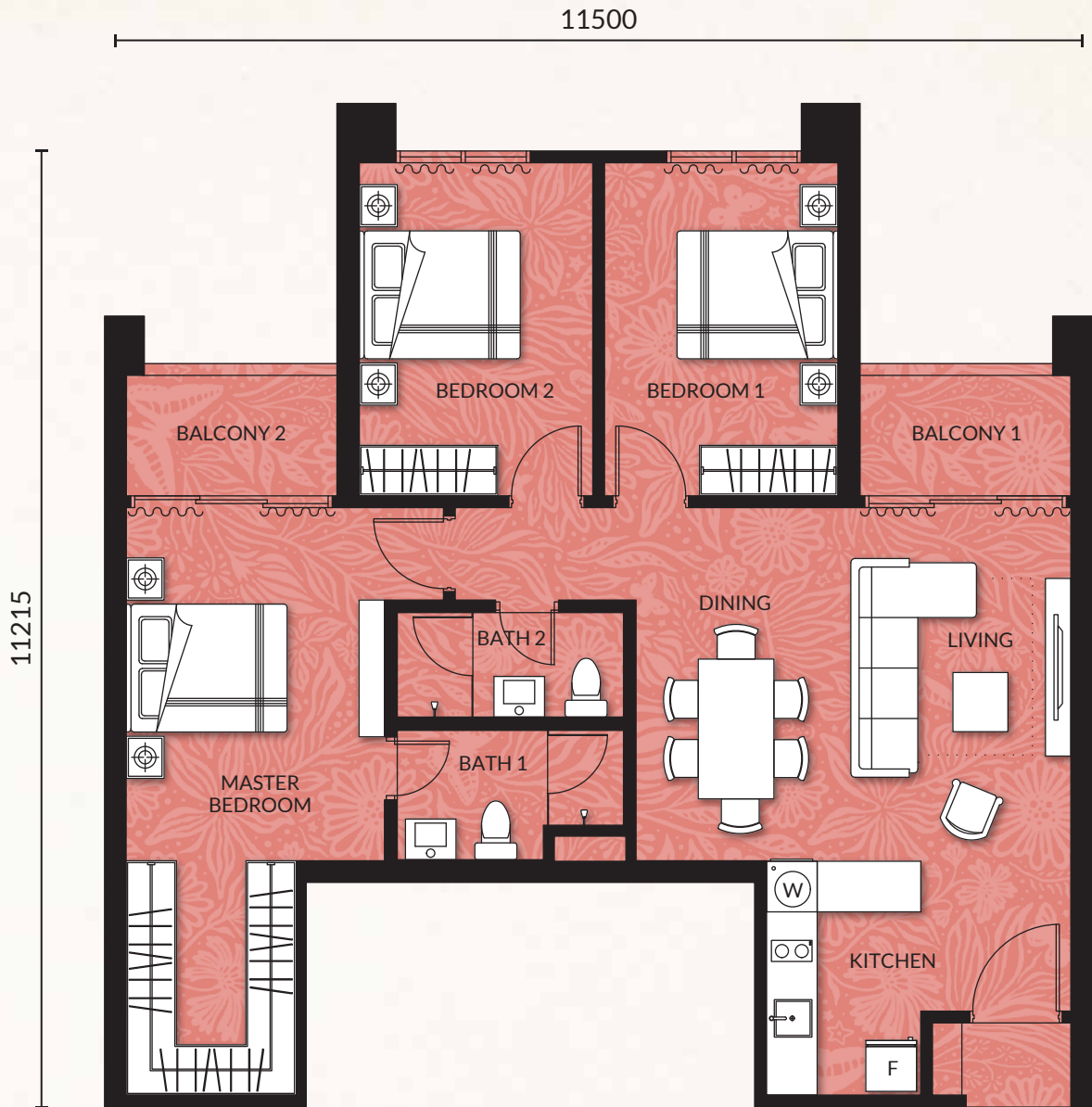


These **corner units** with **more windows** optimise **air ventilation, natural daylight as well as views**. The layout has been designed to combine functionality and spaciousness. A perfect choice for families seeking both quality and affordability.

The information contained herein is subject to change and cannot form part of an offer or contract. All measurements are approximate. While every reasonable care has been taken to prepare this brochure, the developer cannot be held responsible for any inaccuracy. All items are subject to variations, modifications and substitutions as may be required by the authorities or recommended by the architect or engineer.

Type 3

49 Units
 Built-up: 1,084 sq.ft.
 3 Bedrooms + 2 Bathrooms



The unit type combines **space and versatility** to cater for larger families. With an abundance of space inside for flexible living, it includes a balcony to create your private outdoor area or garden. Luxuriate in a spacious master bedroom with a walk-in wardrobe (or study nook) and another private balcony for even more light and views.

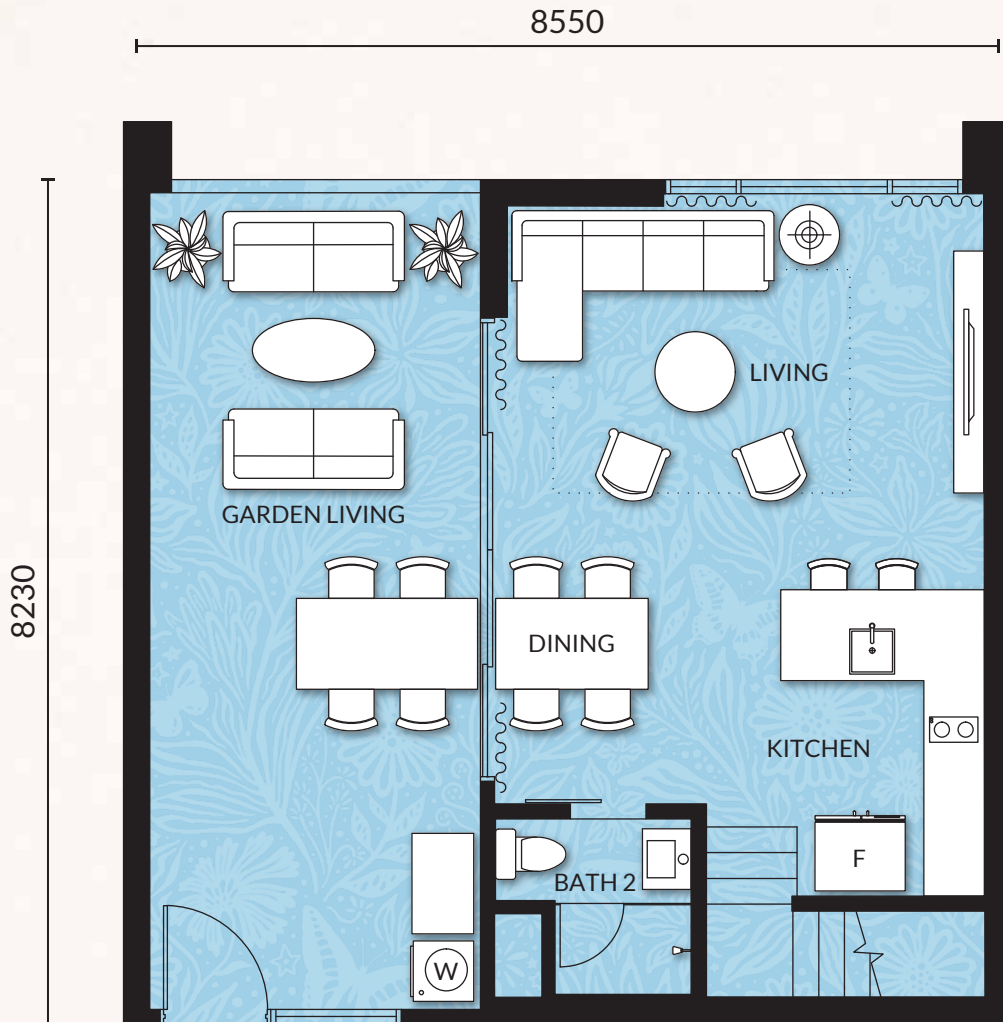
The information contained herein is subject to change and cannot form part of an offer or contract. All measurements are approximate. While every reasonable care has been taken to prepare this brochure, the developer cannot be held responsible for any inaccuracy. All items are subject to variations, modifications and substitutions as may be required by the authorities or recommended by the architect or engineer.

Type 4

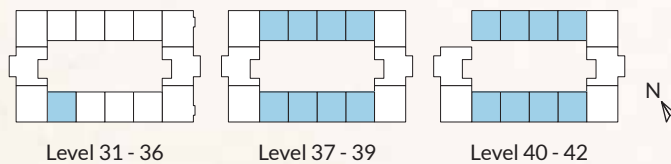
27 Units

Built-up: 1,213 sq.ft. (903 sq.ft. main parcel + 310 sq.ft. garden living)

2 Bedrooms + 2 Bathrooms + Garden Living



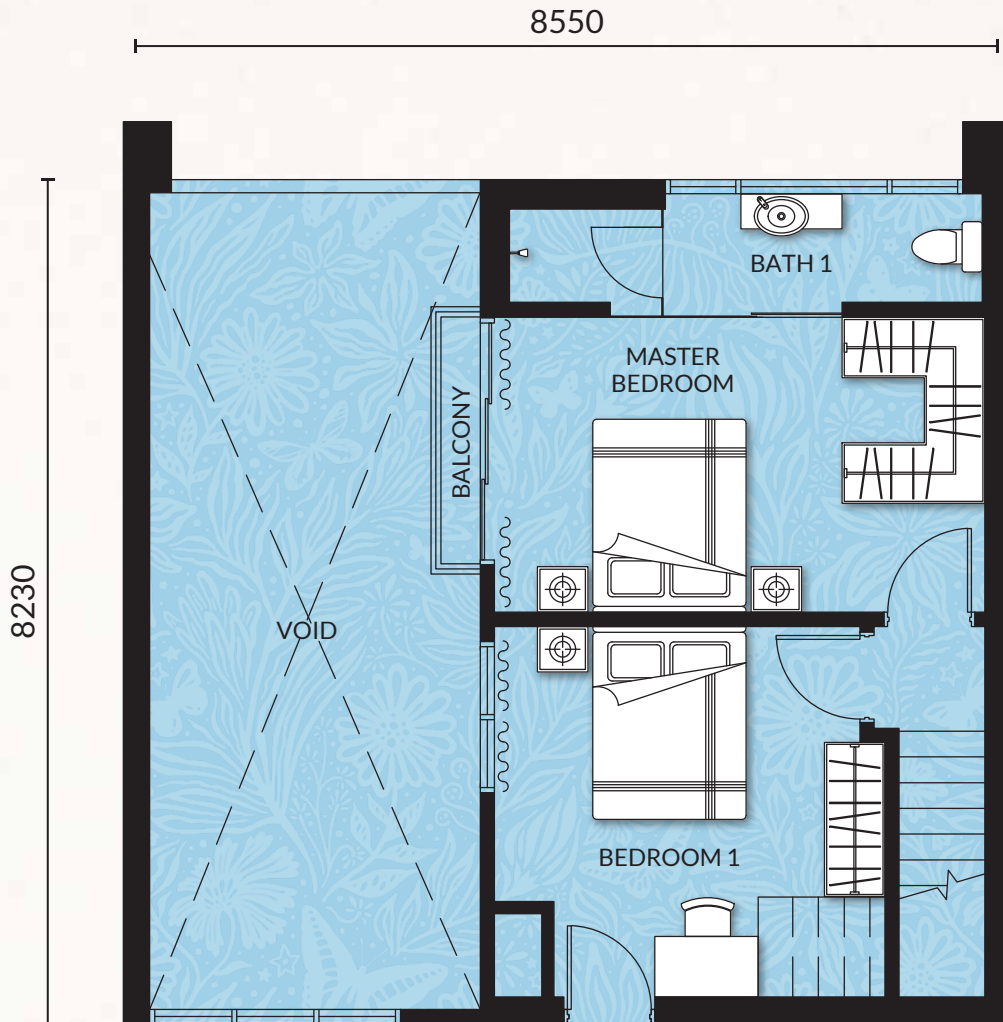
Lower Floor



Level 31 - 36

Level 37 - 39

Level 40 - 42



Upper Floor

Duplex

This **luxury double-storey duplex** is ideal for small families who want a **compact yet flexible** home as well as a **spacious double-volume private garden** and outdoor dining areas. The duplex offers multiple entrances so you can step into your bedroom directly without having to take the stairs.

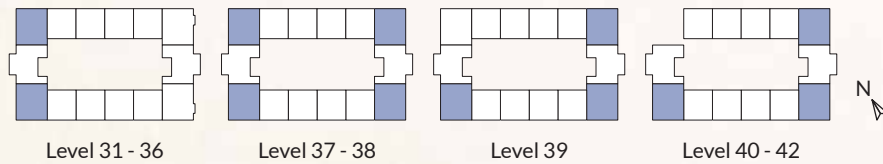
The information contained herein is subject to change and cannot form part of an offer or contract. All measurements are approximate. While every reasonable care has been taken to prepare this brochure, the developer cannot be held responsible for any inaccuracy. All items are subject to variations, modifications and substitutions as may be required by the authorities or recommended by the architect or engineer.

Type 5

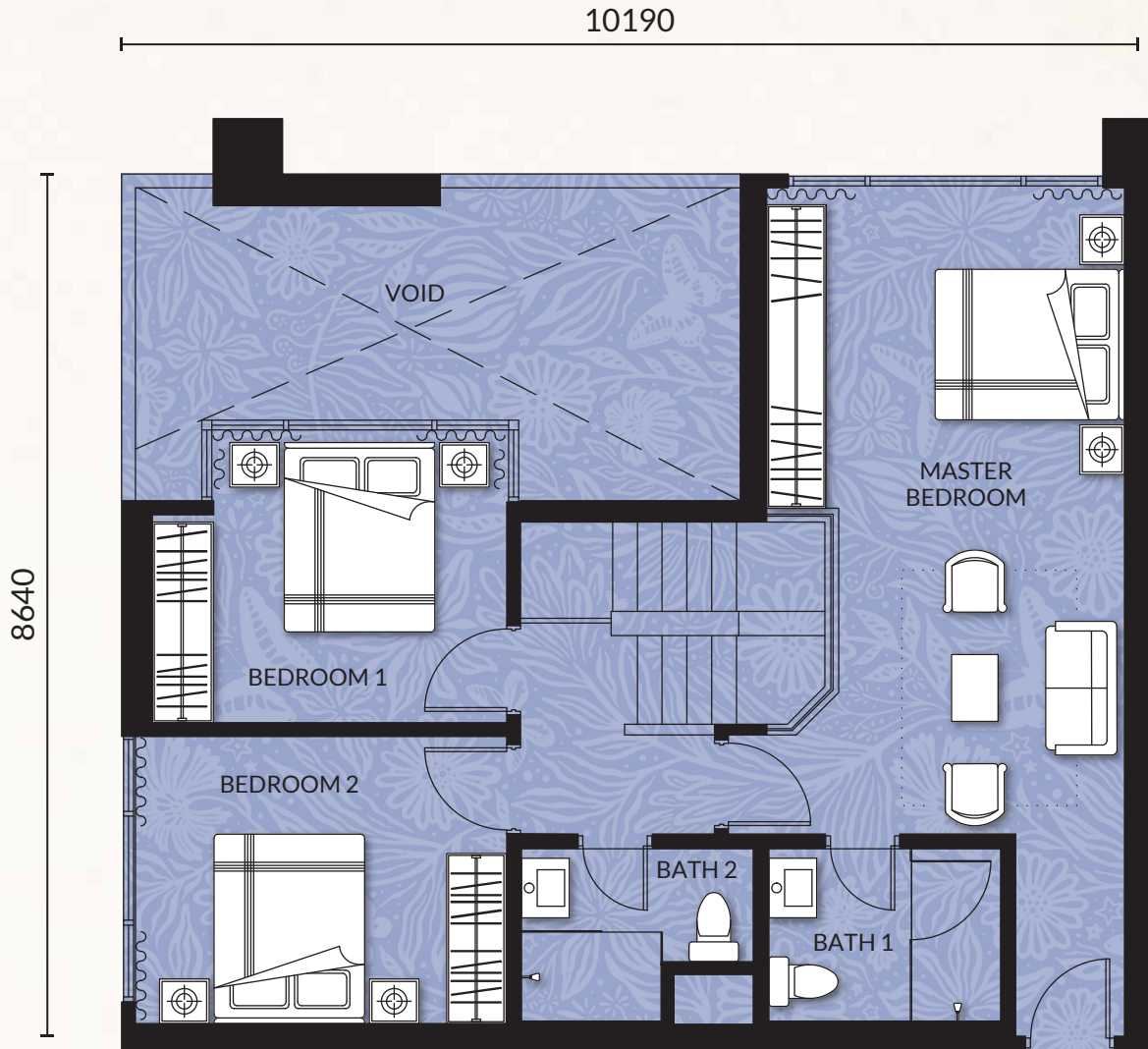
16 Units
 Built-up: 1,694 sq.ft. (1,468 sq.ft. main parcel + 226 sq.ft. garden living)
 3+1 Bedrooms + 3 Bathrooms + Garden Living



Lower Floor



The information contained herein is subject to change and cannot form part of an offer or contract. All measurements are approximate. While every reasonable care has been taken to prepare this brochure, the developer cannot be held responsible for any inaccuracy. All items are subject to variations, modifications and substitutions as may be required by the authorities or recommended by the architect or engineer.



Upper Floor



This double-storey home on the higher floors with a **private garden terrace** to accompany prestige views, is **perfect for larger families**. They come with spacious (and separated) living and dining areas which open to the garden. These corner units provide **more windows to optimise ventilation and natural daylight**. A study or additional guest room allows for further flexibility.

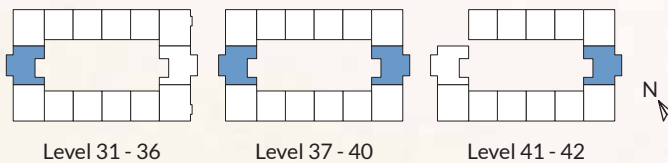
The information contained herein is subject to change and cannot form part of an offer or contract. All measurements are approximate. While every reasonable care has been taken to prepare this brochure, the developer cannot be held responsible for any inaccuracy. All items are subject to variations, modifications and substitutions as may be required by the authorities or recommended by the architect or engineer.

Type 6

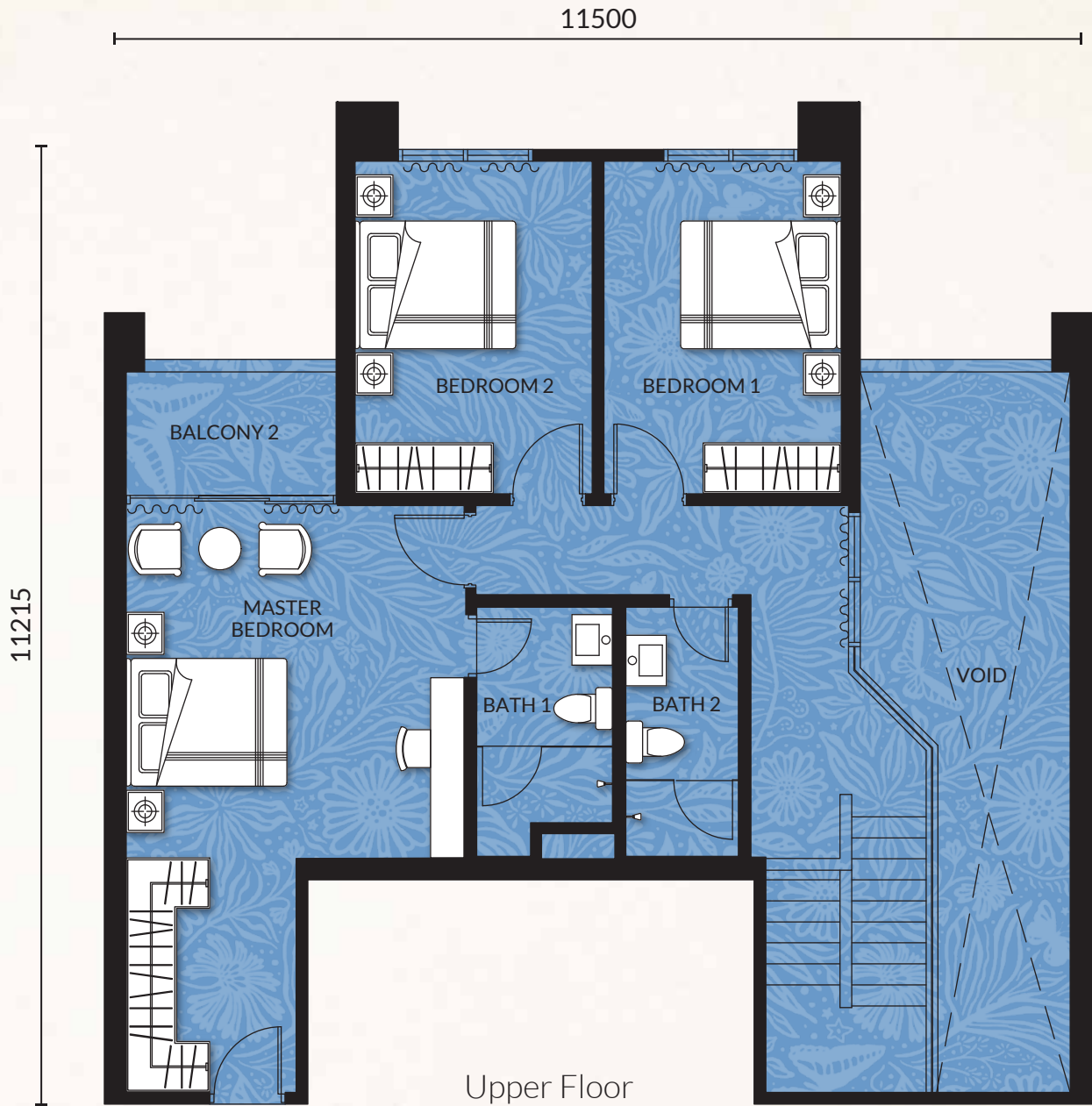
8 Units

Built-up: 1,947 sq.ft. (1,665 sq.ft. main parcel + 282 sq.ft. garden living)

4 Bedrooms + 3 Bathrooms + Garden Living



The information contained herein is subject to change and cannot form part of an offer or contract. All measurements are approximate. While every reasonable care has been taken to prepare this brochure, the developer cannot be held responsible for any inaccuracy. All items are subject to variations, modifications and substitutions as may be required by the authorities or recommended by the architect or engineer.

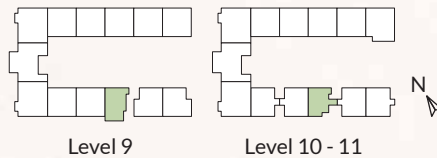


This **luxury double-storey home in the sky** on the higher floors is a **perfect fit for large families**, with a large kitchen as well as **spacious living** and dining areas. It is also exclusively designed with a **private outdoor garden** with multiple entrances to the unit.

The information contained herein is subject to change and cannot form part of an offer or contract. All measurements are approximate. While every reasonable care has been taken to prepare this brochure, the developer cannot be held responsible for any inaccuracy. All items are subject to variations, modifications and substitutions as may be required by the authorities or recommended by the architect or engineer.

Villa V1

3 Units
Built-up: 543-637 sq.ft.
1 Bedroom + 1 Bathroom

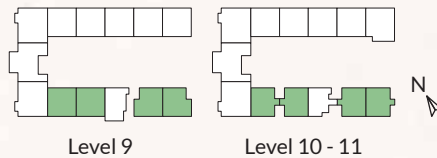
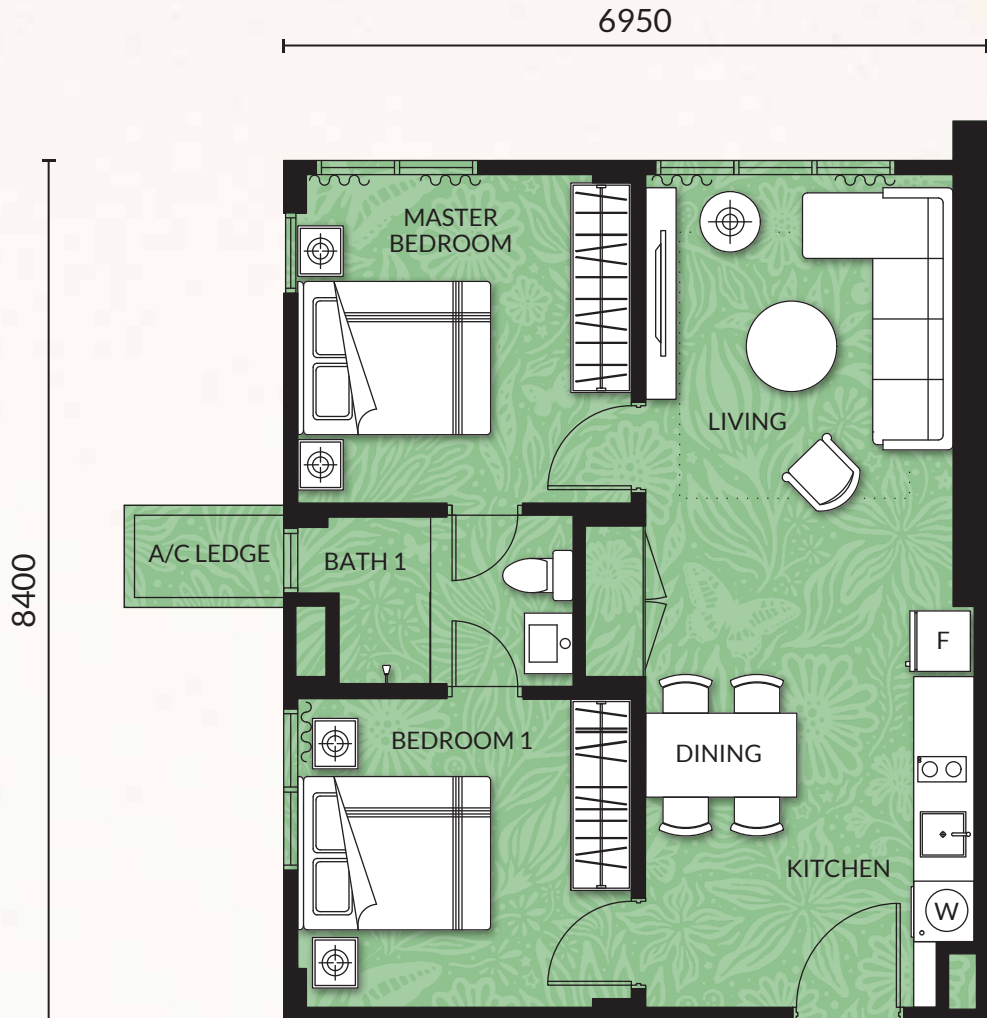


This unit offers the best in contemporary yet private layout design. It is **ideal for young professional singles or couples** who are looking for a compact but functional home. It is also perfect for downsizers who want the ambience of a **landed garden**, but the **security and convenience** of a condominium.

The information contained herein is subject to change and cannot form part of an offer or contract. All measurements are approximate. While every reasonable care has been taken to prepare this brochure, the developer cannot be held responsible for any inaccuracy. All items are subject to variations, modifications and substitutions as may be required by the authorities or recommended by the architect or engineer.

Villa V2

12 Units
Built-up: 643-731 sq.ft.
2 Bedrooms + 1 Bathroom

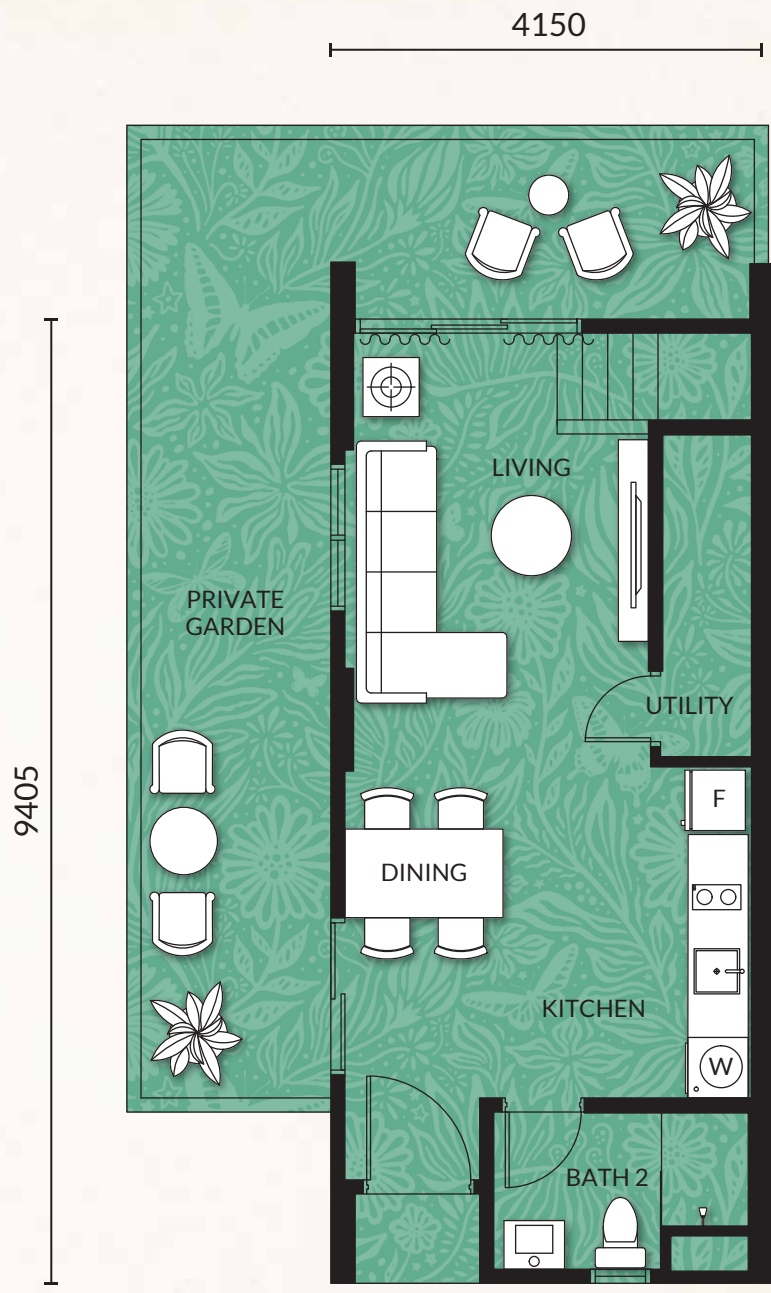


This unit is designed around creating **functional spaces for young and lively singles or couples**. A **premium first-home investment** in a premium location. It is also perfect for downsizers who want the ambience of a **landed garden**, but the **security and convenience** of a condominium.

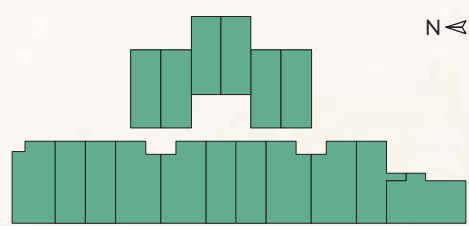
The information contained herein is subject to change and cannot form part of an offer or contract. All measurements are approximate. While every reasonable care has been taken to prepare this brochure, the developer cannot be held responsible for any inaccuracy. All items are subject to variations, modifications and substitutions as may be required by the authorities or recommended by the architect or engineer.

Villa V3

17 Units
Built-up: 914-1,175 sq.ft.
2 Bedrooms + 2 Bathrooms + Garden Living

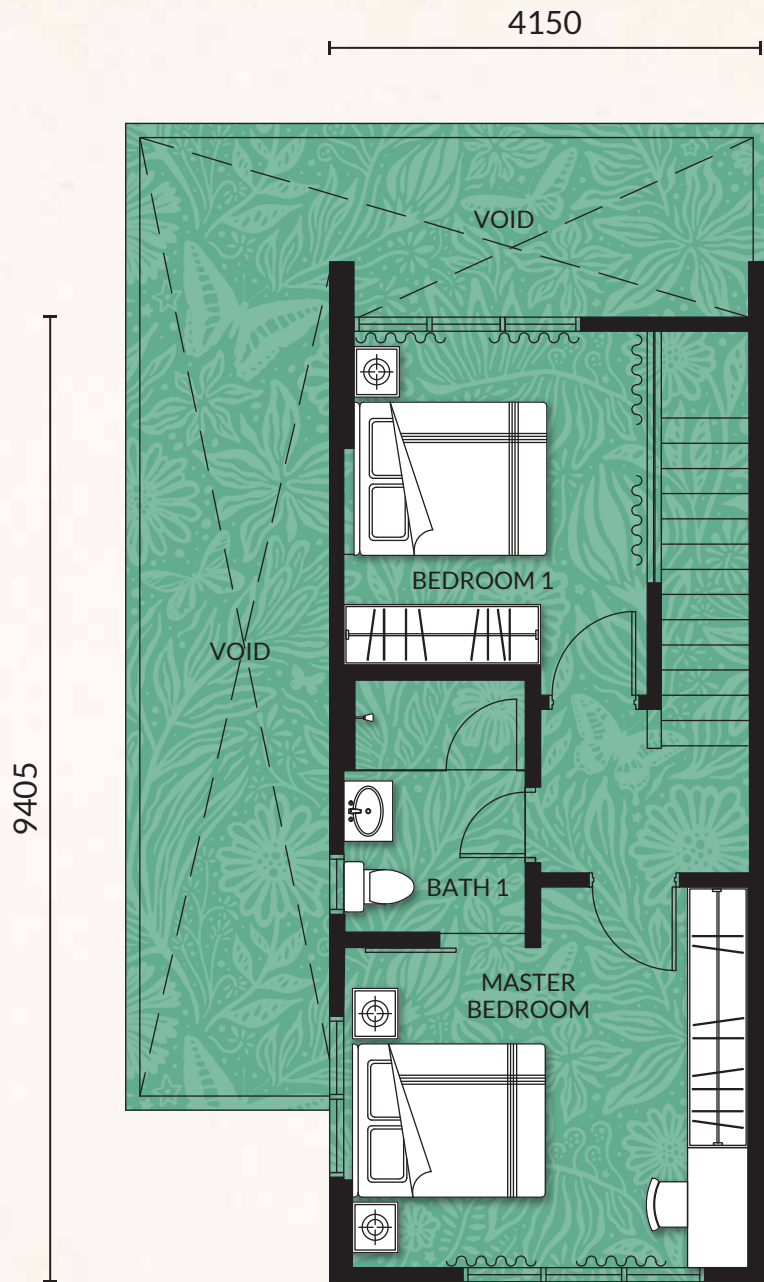


Lower Floor



Level 9 & 10

The information contained herein is subject to change and cannot form part of an offer or contract. All measurements are approximate. While every reasonable care has been taken to prepare this brochure, the developer cannot be held responsible for any inaccuracy. All items are subject to variations, modifications and substitutions as may be required by the authorities or recommended by the architect or engineer.



Upper Floor

This **luxury double-storey duplex** is ideal for small families who want a **compact yet flexible** home as well as a **double-volume private garden**. It is also perfect for downsizers who want the ambience of a **landed garden**, but the **security and convenience** of condominium.

The information contained herein is subject to change and cannot form part of an offer or contract. All measurements are approximate. While every reasonable care has been taken to prepare this brochure, the developer cannot be held responsible for any inaccuracy. All items are subject to variations, modifications and substitutions as may be required by the authorities or recommended by the architect or engineer.